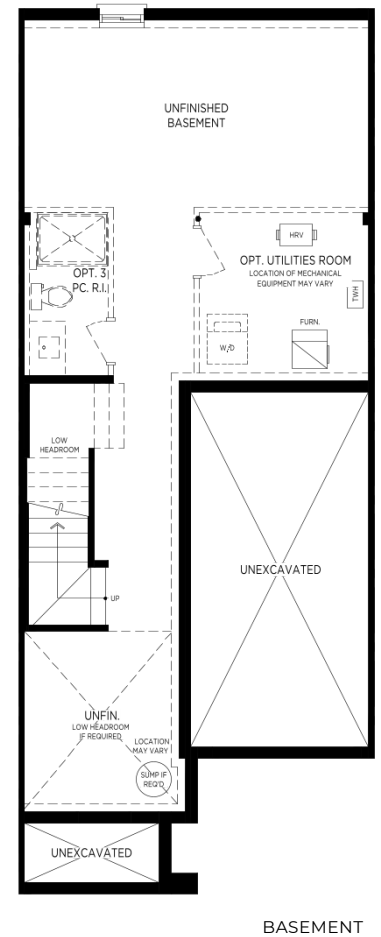
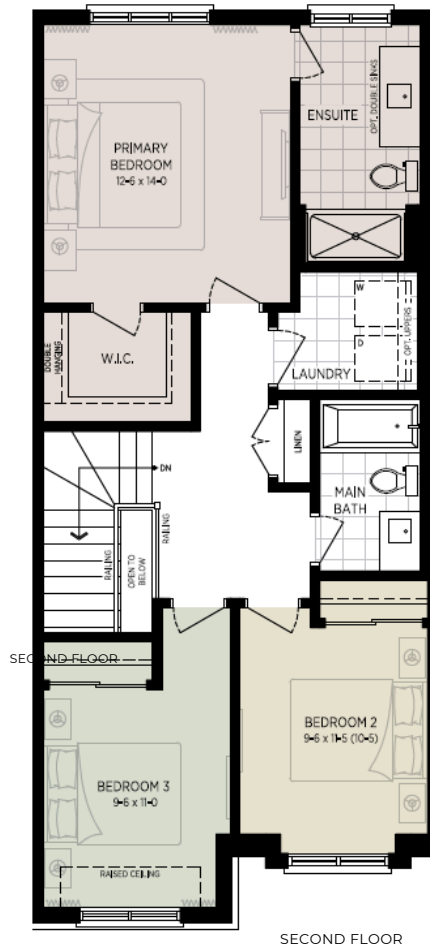
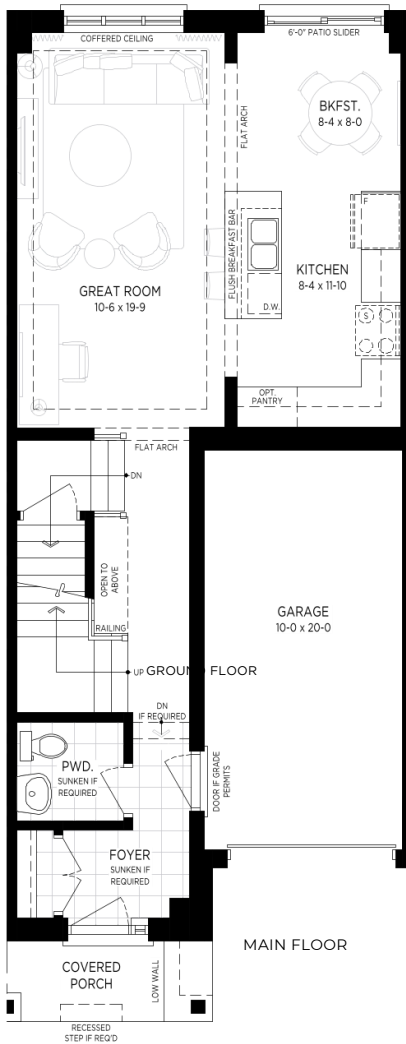


# WEST & POST

NEW TRADITIONAL TOWNS

West&Post  
19-2184 Postmaster Drive  
Lot 8 Arbourview 1,585 SQ.FT.



[Branthaven.com](http://Branthaven.com)

**BRANTHAVEN**

Prices, promotions, deposits, sizes, materials and all specifications are subject to change without notice. Renderings show conceptual artistic representation of a decorated Devon Model. Interior finishes do not apply. Furniture, appliances, decor, accessories, millwork and lighting is shown for demonstration purposes only and not included. Homes come as is. See sales agent for details. E.&O.E.

#### General Upgrades

Keypad electronic deadbolt Halo Wifi Touchscreen smart lock (Satin Nickel)  
Swing Closet Doors In Lieu of sliders; bedroom 2 & bedroom 3

#### Kitchen Upgrades

Microwave w/ Trim Kit Built-in to Pantry, Stainless Steel - 27" Panasonic  
30" Chimney Hood Fan ILO Standard - Whirlpool  
Cabinets Level 2 Kitchen, 2-Hampton - American White - MDF  
Optional pantry cabinet  
Moen Align Single Handle Pulldown Faucet Matte Black  
Corner upper, Upgrade blind cabinet to Neo Angle  
Pull-out Spice Drawer  
Light valance moulding  
Vicostone Counter level 5 ILO Std - Tyrol Polished BQ6705  
Tile backsplash - LaRiviera Gris Nuag - Brick Pattern layout  
Upgrade sink to Blanco IKON 30 401866 Truffle Apron ILO Std

#### Foyer Upgrades

Floor tile level 6 ILO Std - Gemstone Silver Matter 12x24 Centura/Mineral  
8'0 interior doors

#### Powder Room Upgrades

Floor tile level 6 ILO Std - Gemstone Silver Matter 12x24 Centura/Mineral  
8'0 interior doors

#### Primary Ensuite Upgrades

Bank of drawers, Vanity  
Cabinets Level 1 - Cambridge Timber Grey - Maple  
Wall tile level 8 - Fan White Matte - Horizontal Stacked inside niche  
Add Vanity Back & Side Splash 3" High - Std Vicostone Crystal Salt BQ900  
Add shower niche 24"w x 16"h  
Frameless Shower 10 mm clear tempered glass c/w chrome hardware

#### Main Bath Upgrades

Add Vanity Back & Side Splash 3" High - Std Vicostone Crystal Salt BQ900

