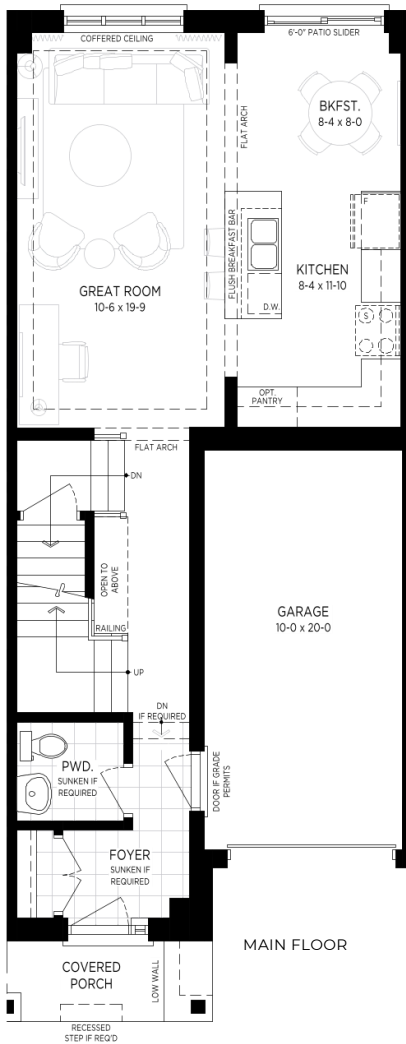


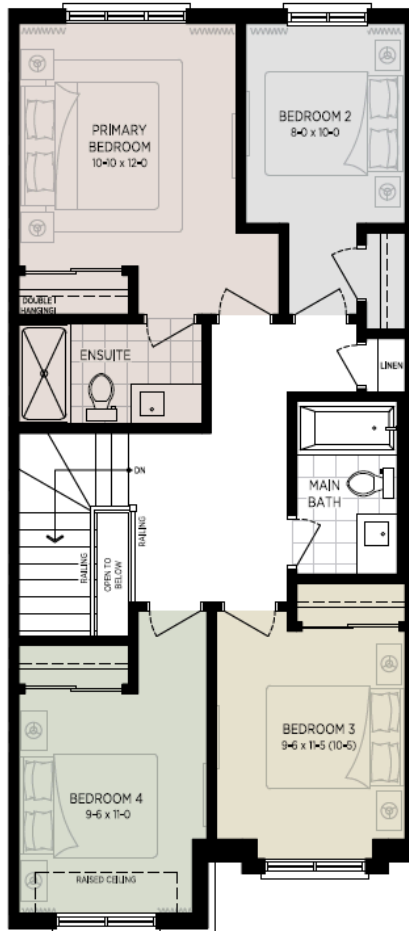
WEST & POST

NEW TRADITIONAL TOWNS

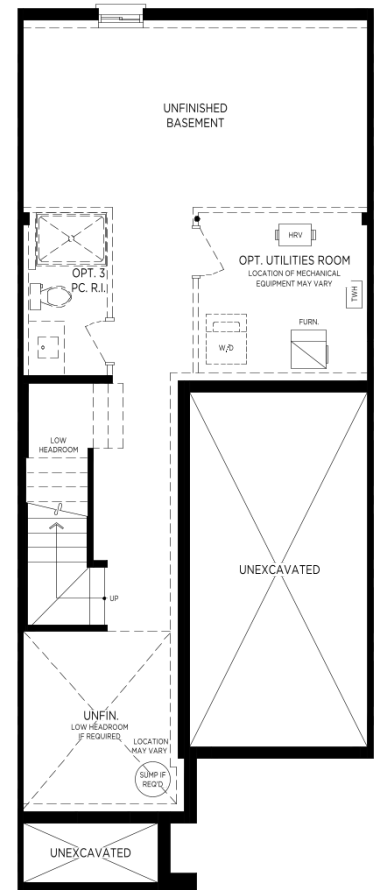
West&Post
7-2184 Postmaster Drive
Lot 20 Arbourview 1,640 SQ.FT.



MAIN FLOOR



SECOND FLOOR



BASEMENT

Branthaven.com

BRANTHAVEN

Prices, promotions, deposits, sizes, materials and all specifications are subject to change without notice. Renderings show conceptual artistic representation of a decorated Devon Model. Interior finishes do not apply. Furniture, appliances, decor, accessories, millwork and lighting is shown for demonstration purposes only and not included. Homes come as is. See sales agent for details. E.&O.E.

General Upgrades

Upgrade to an Egress Basement Window. 47 x 35 side slider at Rear Only.

3-Pc Plumbing Rough-In (ABS drain, capped water lines) in Basement

Humidifier, up to 2400 SF and Media Type Air Cleaner

Gas line for Stove and BBQ, includes electrical receptacle on separate circuit and increased gas line to 1-1/4"

Garage Door Opener with additional Garage Door Remote

Hardwire rough-in for future electric car charger. Includes upgrade to 200 Amp Service

Interior Doors Level 1 w/ Modern Trim (whole house only)

Kitchen Upgrades

Rough-in for Fridge Water Line

Optional Pantry Cabinet Standard

Microwave w/Trim Kit Built-in to Pantry, Stainless Steel Panasonic with Trim Kit built-in to pantry, including receptacle.

Kitchen backsplash tile Installation in Brick Pattern

Primary Ensuite Upgrades

Comfort/Plus Height Toilet

Moen Vichy Posi Temp Shower Faucet chrome

Main Bath Upgrades

Vichy Posi Temp Tub Shower Faucet ILO Std T2663EP / 62320 Chrome

